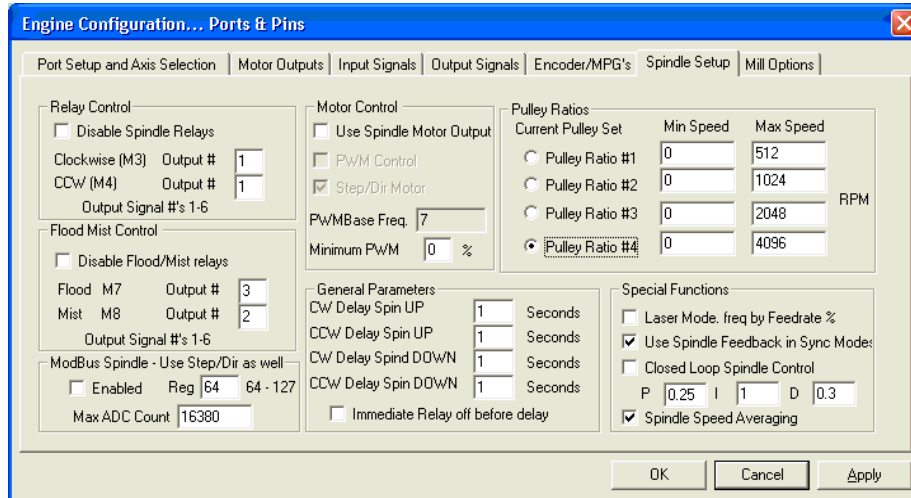


## Spindle Setup:

Below is the spindle setup menu. Note that the “Disable spindle relays” and “Disable flood/Mist relays” are unchecked and the proper output numbers are selected. And are the only entries relevant to the encoder interface on this menu.



## Mill options: (not shown)

The last tab in the “Ports and Pins” configuration covers digitizing and THC selections. And there are no relevant entries to the Encoder Interface.