

Guide for installing second PCI parallel port in Windows XP

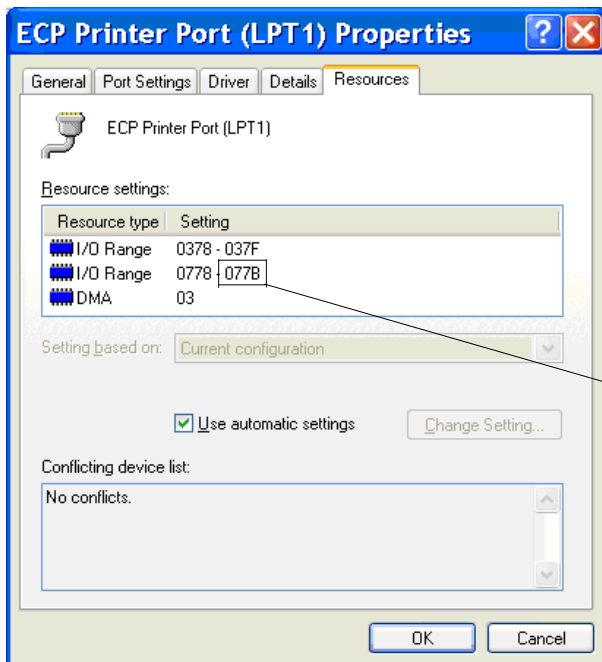
Step 1. Remove power from PC and open enclosure. Install PCI parallel port card in any available PCI slot. Replace screw and secure PC enclosure.

Step 2. Boot PC, Windows will automatically find the new hardware and install a driver for it. If not, the card should come with it's own software driver on included disc. Install from the OEM disc instead.

Step 3. Mach will need to know the address of this port to communicate with it. It will need be entered into the "Config/ports and pins/ port setup and axis selection" menu in Mach software. To find the address of the newly installed second parallel port, simply navigate to the hardware profiles in Windows XP as follows:

Click: Start/Control Panel/System/Hardware/Device Manager/Ports (Com & LPT)/ Printer Port LPT/ Resources.

A window like the one below should be displayed. The first line will be the primary parallel port and the second line should correspond to the second parallel port. The four digits in the box are what is needed to be entered into Mach "config" "Ports and pins" menu. Mach will automatically change it to "0x778" when the address is saved/Applied. Also on the same menu in Mach, place a check in the "Enable port 2" and "Pins 2-9 as inputs" boxes.



Will be one of these.